

Time left 0:27:54

Question 14

yet
answered

marked out of
10

Flag
question

The SQL statement to provide 'delete' and 'insert' privileges to user 'Omar' on 'Department' table is:

Select one:

- Grant delete, insert on Omar to Department;
- Grant delete, insert on Department to Omar;
- Grant Omar with delete, insert on Department;
- Grant delete, insert to Omar on Department;

POWERUNIT

Next page

Time left 0:

Question 6

Not yet answered

Marked out of 2.00

Flag question

Which of the following SQL Queries identifies instructors that have no dependents ?

- Select name from instructor where dependent_id like Null
- Select name from instructor where dependent_id = Null
- Select name from instructor where dependent_id is not Null
- Select name from instructor where dependent_id is Null

Clear my choice

POWERUNIT

Next page

Introduction to database systems | جميع الشعب

courses > introduction to database systems | جميع الشعب > General > Database Final Exam (click here)

Time left 0:00:47

The statement

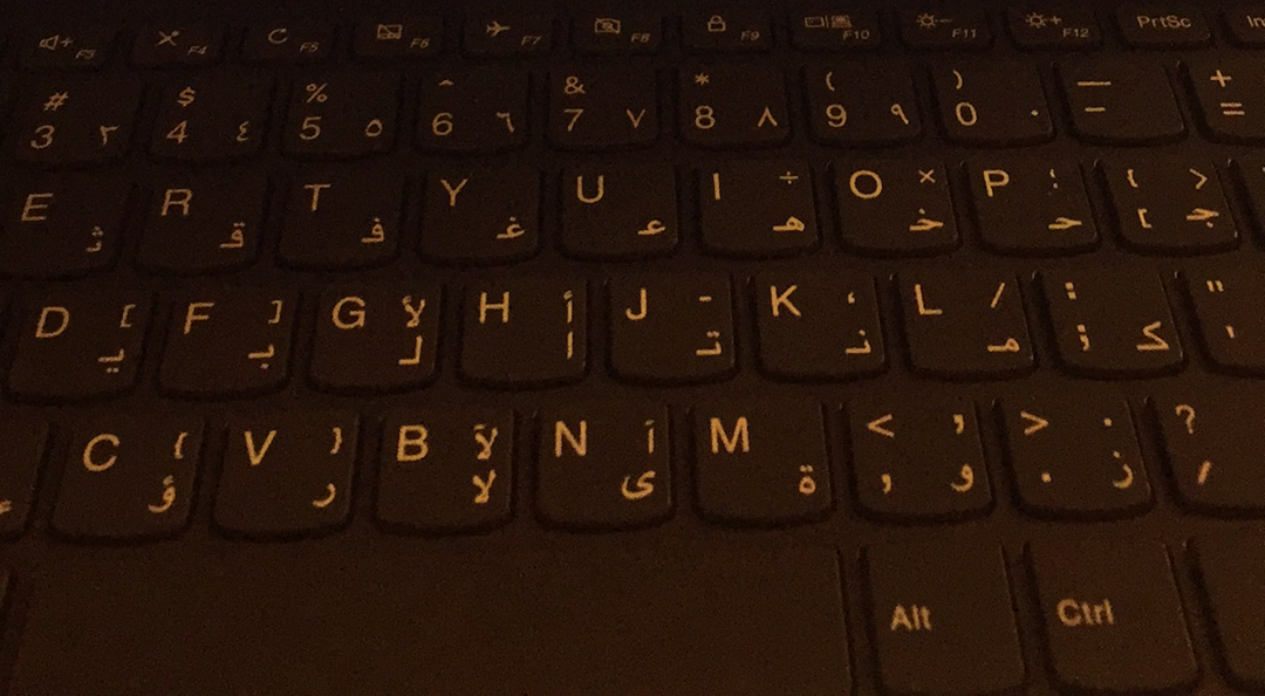
"transfer of funds from one account to another should either complete or not happen at all" refers to:

- Data redundancy
- Data atomicity
- Data inconsistencies
- Data transparency

POWERUNIT

Finish attempt ...

ch

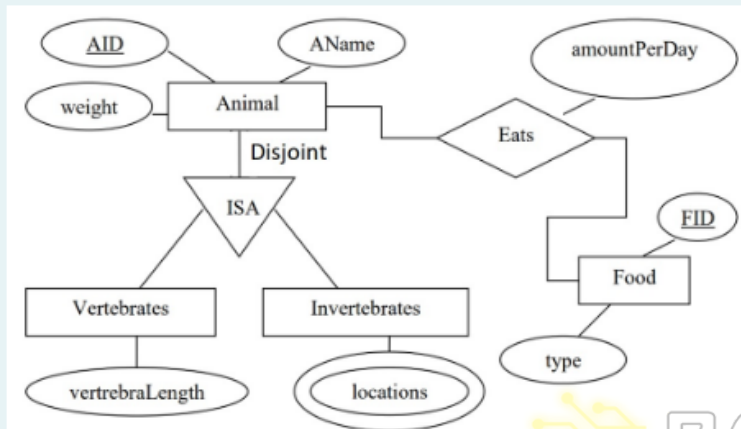




Time left 0:02:04

Question 20
Not yet answered
Marked out of 2.00
Flag question

After mapping the following ERD, then the suitable schema for table *Invertebrates* is



- (AID, AName, weight)
- (AID)
- (AID, AName, weight, locations)

Quiz navigation

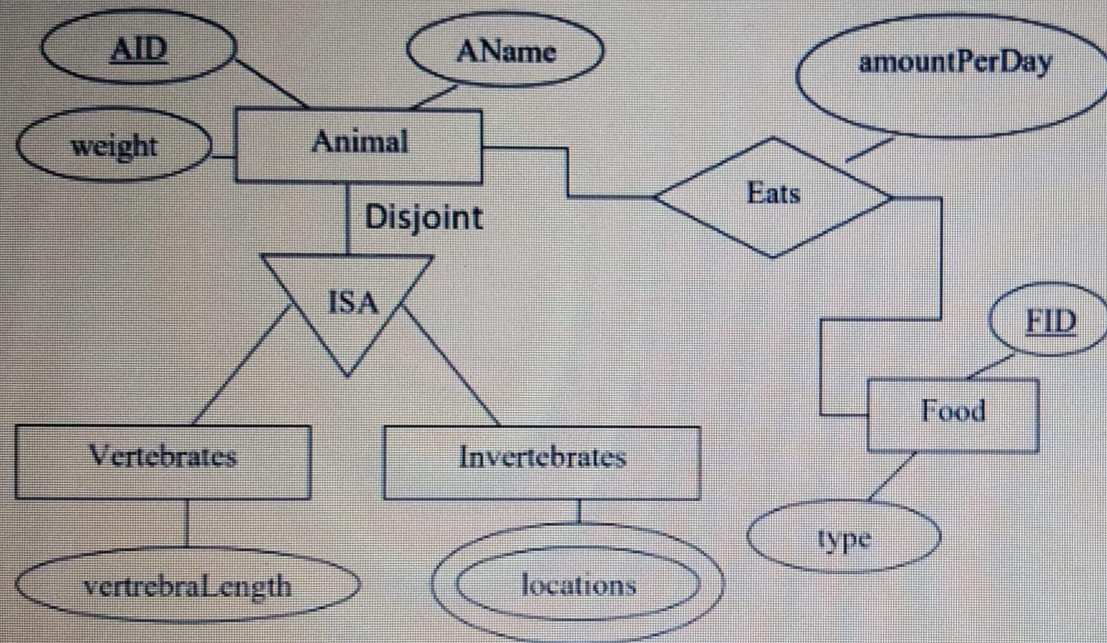
1	2	3	4	5	6
7	8	9	10	11	12
13	14	15	16	17	18
19	20	21	22	23	24
25					

Finish attempt ...



Activate Windows
Go to PC settings to activate Windows.

After mapping the following ERD, then the suitable schema for table *Invertebrates* is



- (AID, AName, weight)
- (AID)
- (AID, AName, weight, locations)

Introduction to database system

My courses

introduction to database systems | جميع الشعب

Gen

emp_sup

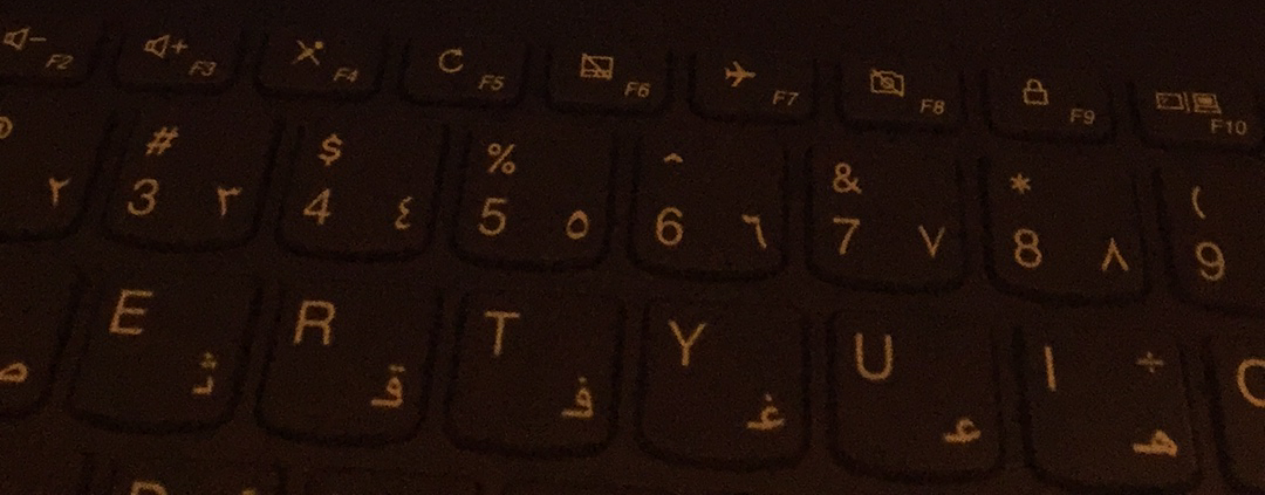
Person	Supervisor
Susan	null
Bob	Alice
Alice	David
David	Mary
Mary	Susan

POWER@UNIT

Based on the above table, what is the output of the following SQL statement:
`select * from emp_sup as e1 natural right outer join emp_sup as e2;`

Person	Supervisor
Susan	null
Bob	Alice

ere to search



Introduction to database system

My courses

introduction to database systems | جميع الشعب

Gen

n 24

ed

d out of

g

ion

emp_sup

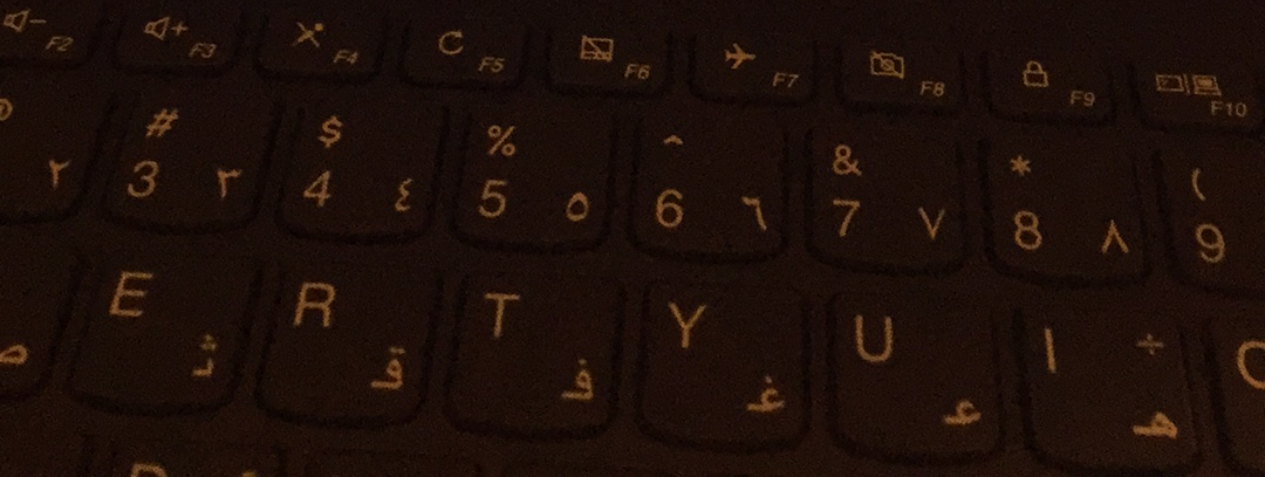
Person	Supervisor
Susan	null
Bob	Alice
Alice	David
David	Mary
Mary	Susan

POWERUNIT

Based on the above table, what is the output of the following SQL statement:
`select * from emp_sup as e1 natural right outer join emp_sup as e2;`

Person	Supervisor
Susan	null
Bob	Alice

ere to search



Based on the tables below, how many rows the following SQL statement will produce

orders

product	quantity	orderId
wheel	100	123
axle	10	123
wheel	20	999
nut	30	444
nut	50	999

pricing

product	price
axle	10
wheel	20
screw	2
bolt	5
nut	3

```
Select product, sum(quantity)
from orders
group by product
having sum(quantity) >= 80
```

POWERUNIT

- Four rows
- Three rows
- Two rows



Time left 0

When some elements in relation **A** may not be mapped to any elements in relation **B**, then the cardinality between **A** and **B** can be:

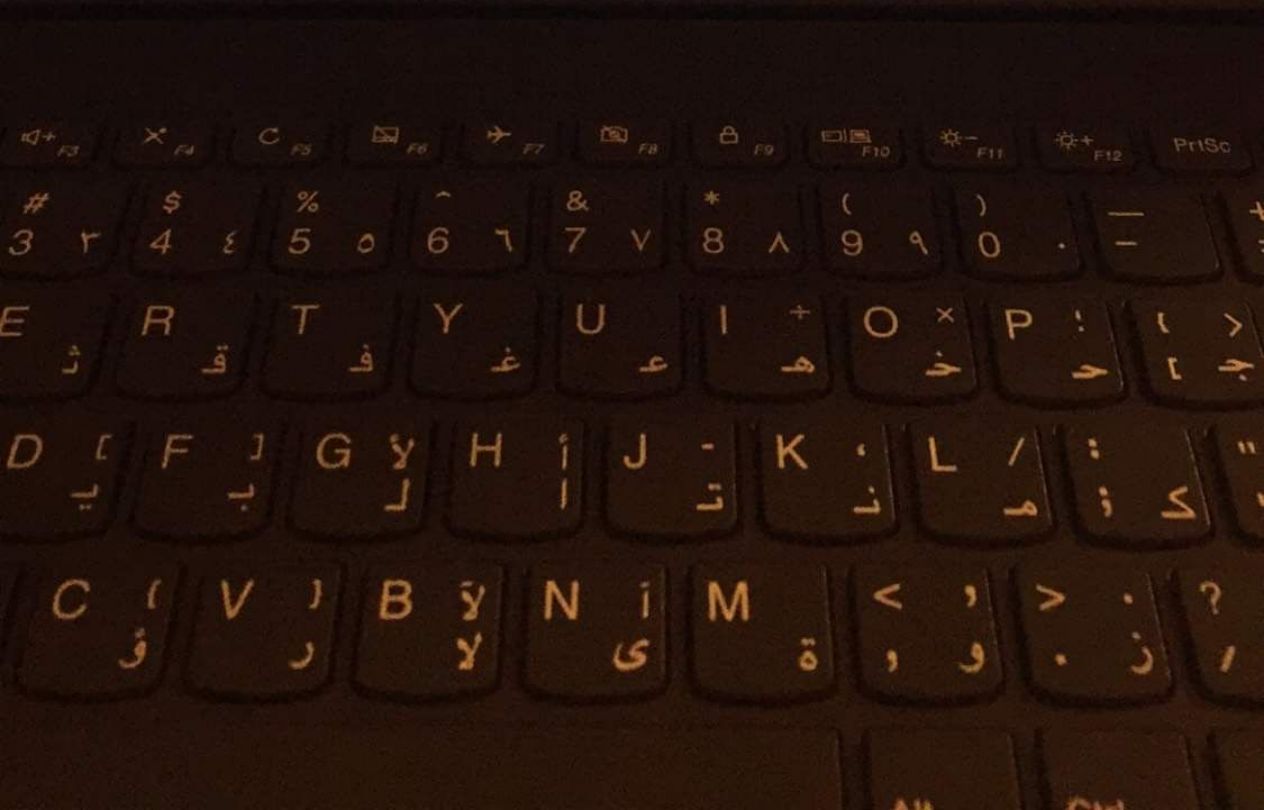
- M to M
- All the given choices
- 1 to M
- M to 1

POWERUNIT



Next page

ouch



Time left 0:05:30

The _____ consists of a sequence of query and/or update statements, which must be executed as a unit of work

- Integrity Constraint
- Transaction
- View
- Table

POWERUNIT

Next page

Time left 0:04:51

Question 25

Not yet answered

Marked out of 2.00

Flag question

How many candidate keys the following table has?

Emp		
Person	Job	District
Jim	Cleaning	Crimson
Jim	Gardening	Pink
Sally	Dog walking	Pink
Sally	Gardening	Pink
Sally	Cleaning	Scarlet

- There are no candidate keys
- Two candidate keys
- Three candidate keys
- One candidate key



Quiz navigation

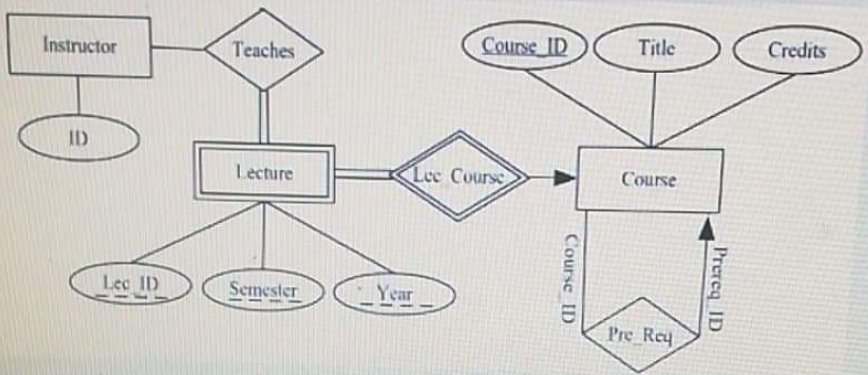


Finish attempt ...

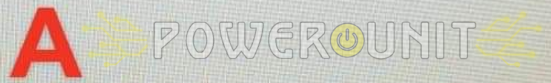
Finish attempt ...

Time left 0:04

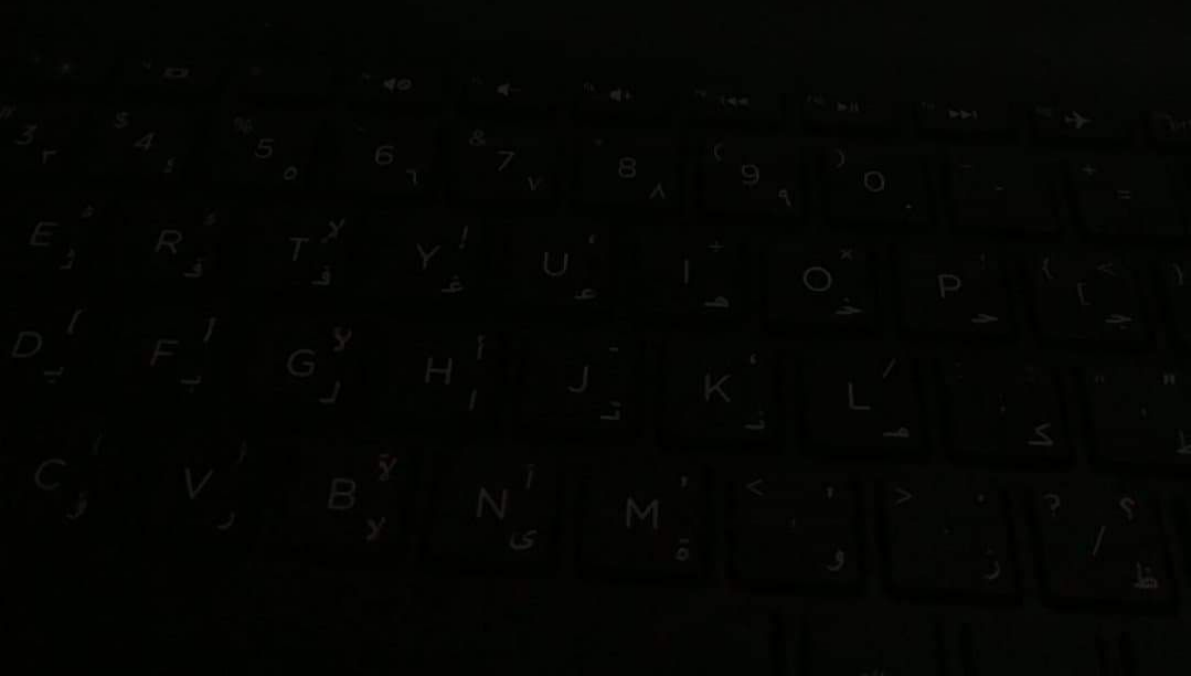
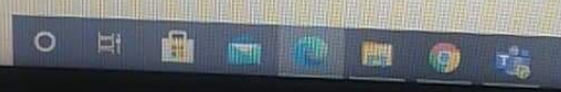
21
How many relations will be produced from mapping the following ERD?



- Four relations
 - Five relations
 - Six relations
 - Three relations
- [Clear my choice](#)



ere to search



Student

ID	Name	Address
0123	Ahmad	Amman
0124	Issa	Aqaba

Mall

ShopID	SName
001	R&Z
002	XYZ
003	MMB

Based on the above tables, how many records will be generated after executing the following SQL statement:

Select * from Student, Mall;

- 3 records
- 5 records
- 9 records
- 6 records

POWERUNIT

Question 24

Not yet answered

Marked out of 3.00

Flag question

Time left 0:08:04

Based on the following TWO Tables (Products and Parts), which SQL query finds the total weight for each type of toy ?

Products Table				Parts Table	
Toy	Part	Number	Colour	Part	Weight
Alien	head	2	green	tentacle	15
Alien	alien body	1	purple	alien body	75
Alien	tentacle	10	green	wheel	25
Car	car body	1	blue	car body	60
Car	wheel	4	red	funnel	20
Engine	wheel	6	blue	head	40
Engine	funnel	1	red		

- SELECT Toy, SUM(Number * Weight) AS TotalWeight
FROM Products NATURAL JOIN Parts
GROUP BY TotalWeight;
- SELECT Toy, SUM(Number * Weight) as TotalWeight
FROM Products INNER JOIN Parts
ON Products.Part = Parts.Part
GROUP BY Toy;
- SELECT Toy, SUM(Number * Weight) AS TotalWeight
FROM Products,Parts
GROUP BY Toy;
- SELECT Toy, (Number * Weight)AS TotalWeight
FROM Products,Parts
GROUP BY Toy;

POWERUNIT

1	2	3	4	5
10	11	12	13	14
19	20	21	22	23

Finish attempt ...

Question 19
Not yet answered
Marked out of 1.00
Flag question

Time left

Based on the tables below, how many rows the following SQL statement will produce

orders

product	quantity	orderid
wheel	100	123
axle	10	123
wheel	20	999
nut	30	444
nut	50	999

pricing

product	price
axle	10
wheel	20
screw	2
bolt	5
nut	3

Select product, sum(quantity)
from orders
group by product
having sum(quantity) >= 80

- Four rows
- Two rows
- One row
- Three rows

Clear my choice

A



Type here to search



When some elements in relation **A** may not be mapped to any elements in relation **B**, then the cardinality between **A** and **B** can be:

- 1 to M
- M to 1
- All the given choices
- M to M



The SQL statement to provide 'delete' and 'insert' privileges to user 'Omar' on 'Department' table is:

Select one:

- Grant delete, insert on Omar to Department;
- Grant Omar with delete, insert on Department;
- Grant delete, insert to Omar on Department;
- Grant delete, insert on Department to Omar;

[Clear my choice](#)



[Next page](#)

Time left 0:11:17

When we define 'Domains' in SQL, we can add constraints to the definition such as the check constraint

True or False?

Select one:

- True
- False

Qqqqqqq

Next page

POWERUNIT

Quiz navigation

1	2	3	4	5	6
7	8	9	10	11	12
13	14	15	16	17	18
19	20	21	22	23	24
25					

Finish attempt ...

tion 18
et
ered
ed out of
ag
stion

ay in touch
ntact Info
e here to search



Question 22

Not yet answered

Marked out of 2.00

Flag question

ID	Name	Grade	Age
10	Tom	1	20
31	Jack	2	21
11	Sam	3	23
12	Sally	1	24
14	Sarah	8	25
26	Silvia	3	26

Time left 0:13:27

Finish atte

Based on the above Employee table, HOW MANY rows will result from the following SQL query:

```
select grade, min(age)
from employee
where age > 22
group by grade
having min(age) >23
```

Select one:

- FIVE rows
- SIX rows
- TWO rows
- THREE rows
- FOUR rows



introduction to database systems | جميع الشعب

courses introduction to database systems | جميع الشعب General Database Final Exam

Time left

When we define 'Types' in SQL, we can add constraints to the definition such as the Not Null constraint

True or False?

Select one:

- True
- False

POWERUNIT




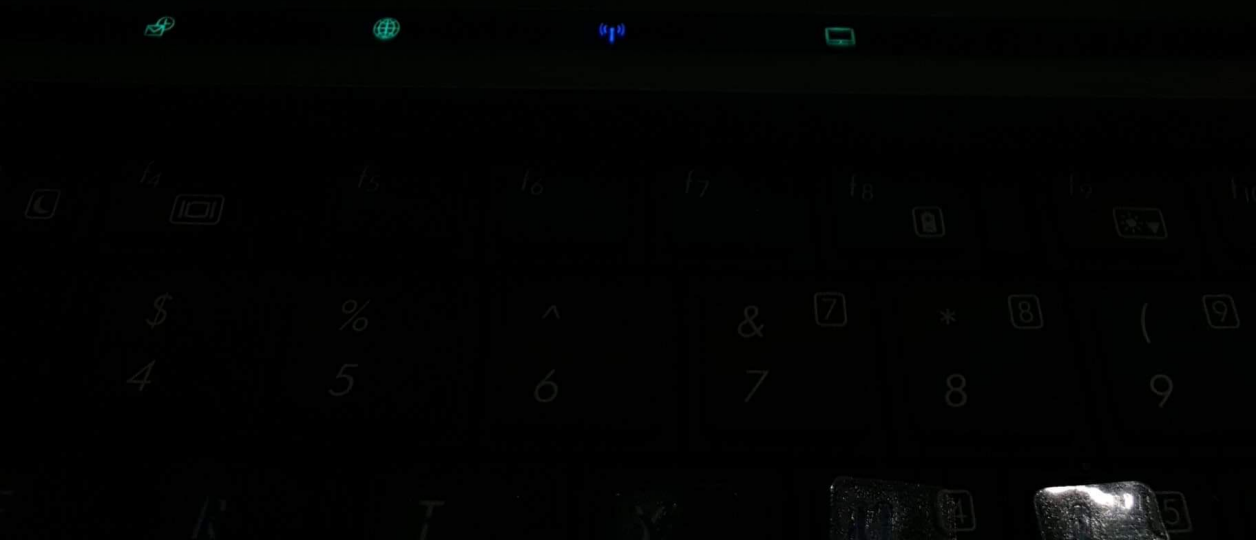
Next page



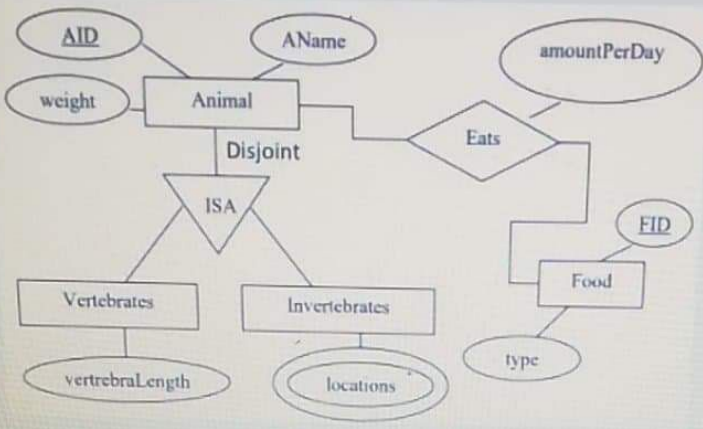
After normalizing the following table, which of the given option represents the normal Form ?

ID	Name	Major	Collage	Course_ID	Instructor_ID	Instructor_Name
1	Omar	Biology	Science	1001	9001	John
				2001	9002	Kareem
3	Salem	CIS	KASIT	3001	8001	Ahmad

- (ID, Name, Major, College)
(Course ID, Instructor_ID, Instructor_Name)
(ID, Course ID)
- (ID, Name, Major, College)
(Course ID, Instructor_ID, Instructor_Name)
- (ID, Name, Major, College) 
(Course ID, Instructor_ID, Instructor_Name)
(ID, Course ID)
- (ID, Name, Major, College)
(Course ID, Instructor_ID, Instructor_Name)
(Course ID, ID)



After mapping the following ERD, then the suitable schema for table *Invertebrates* is



- (AName, weight)
- (AID, AName, weight)
- (AID)
- (AID, AName, weight, locations)

POWERUNIT



حدا حله بليز

Which of the following SQL statements does not repeat the common attributes:

- Select * from Course natural join Prereq;
- select * from Course, Prereq where Course.CID = Prereq.CID;
- select * from Course inner join Prereq on Course.CID = Prereq.CID;
- select * from Course cross join Prereq on Course.CID = Prereq.CID;

[Clear my choice](#)

POWERUNIT

صح؟



How many candidate keys the following table has?

Emp

Person	Job	District
Jim	Cleaning	Crimson
Jim	Gardening	Pink
Sally	Dog walking	Pink
Sally	Gardening	Pink
Sally	Cleaning	Scarlet

- Three candidate keys
- Two candidate keys
- One candidate key
- There are no candidate keys

Question 13

Not yet
answeredMarked out of
2.00Flag
question

Time left 0:23:26

Uncontrolled concurrent accesses by multiple users can lead to:

- Data inconsistencies
- Data transparency
- Data redundancy
- Data atomicity

[Clear my choice](#)POWERUNIT[Next page](#)

Quiz n



Finish atte

Question 12

Not yet
answeredMarked out of
2.00Flag
question

Based on the Two Tables, how many Null values the given query will produce?

orders			pricing	
product	quantity	orderid	product	price
wheel	100	123	wheel	10
axle	10	123	axle	20
axe	20	999	axe	2
nut	50	999	nut	3

Select *

from orders natural left outer join pricing;

- Two Null Values
- Three Null Values
- There will be No Null Values
- One Null value

Clear my choice

POWERUNIT

Finish attempt ...

Question 11

Not yet answered

Marked out of 2.00

Flag question

Employee

EID	Name	Department
001	Ahmad	CS
002	Ali	CIS
003	Sameh	CIS
004	Salem	BIT
005	Huda	SC
006	Ali	BIT

Time left 0:28:10



Finish attempt ...

Based on the above table, how many records and columns will be generated after executing the following SQL statement:

```
Select department, count(EID)
from employee
group by Department
order by Name;
```

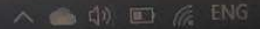
- 3 records and One column
- 4 records and One column
- 4 records and Two columns
- 5 records and Two columns

Clear my choice

POWERUNIT



Type here to search



ENG

9:33 PM

1/11/2021

Which of the following SQL Queries identifies instructors that have dependents ?

- Select name from instructor where dependent_id like Null
- Select name from instructor where dependent_id is not Null
- Select name from instructor where dependent_id <> Null
- Select name from instructor where dependent_id is Null



Question 11

Not yet answered

Marked out of 2.00

Flag question

Based on the emp schema structure below, which of the following SQL queries will get department names for all employees?

Time left 0:28:23

```
emp(Name varchar(20),
     ID char(5),
     Dep_name varchar(20),
     Salary numeric(8,2));
```

Select one:

- Select dep_name, count(ID)
from emp
group by dep_name
having count(ID) = 1
- Select dep_name, count(ID)
from emp
group by dep_name
where count(ID) = 1
- Select dep_name, sum(ID)
from emp
group by dep_name
having sum(ID) = 1
- Select count(ID)
from emp
group by dep_name
where count(ID) = 1

POWERUNIT



Introduction to database systems | جميع الشعب

My courses

introduction to database systems | جميع الشعب

General

Database Final Exam

Time left 0

For the many-to-many case, the relationship set must be represented as a separate relation that cannot be combined with either participating entity.

True or False?

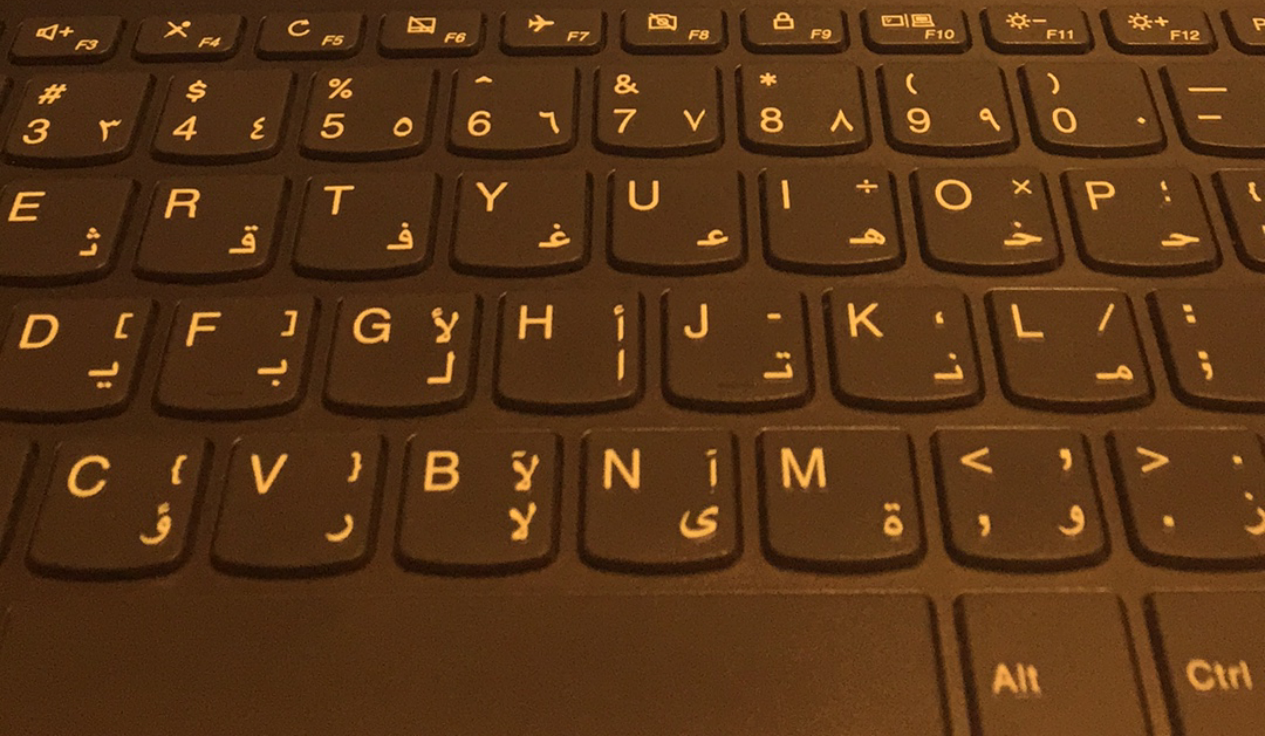
Select one:

True

False

POWERUNIT

Next page



Student

ID	Name	Address
0123	Ahmed	Amman
0124	Issa	Aqaba
0125	Salam	Amman

Mall

ShopID	SName
001	REZ
002	XYZ
003	MMB

Based on the above tables, how many records will be generated after executing the following SQL statement:

Select * from Student, Mall;

- 5 records
- 6 records
- 9 records
- 3 records

[Clear my choice](#)

Not yet answered

Marked out of 3.00

Flag question

of toy ?

Products Table

Toy	Part	Number	Colour
Alien	head	2	green
Alien	alien body	1	purple
Alien	tentacle	10	green
Car	car body	1	blue
Car	wheel	4	red
Engine	wheel	6	blue
Engine	funnel	1	red

Parts Table

Part	Weight
tentacle	15
alien body	75
wheel	25
car body	60
funnel	20
head	40

Time left 0:30:53

9	10	11	12
17	18	19	20
25			

Finish attempt ...

- SELECT Toy, SUM(Number * Weight) AS TotalWeight
FROM Products NATURAL JOIN Parts
GROUP BY TotalWeight;
- SELECT Toy, SUM(Number * Weight) as TotalWeight
FROM Products INNER JOIN Parts
ON Products.Part = Parts.Part
GROUP BY Toy;
- SELECT Toy, SUM(Number * Weight) AS TotalWeight
FROM Products,Parts
GROUP BY Toy;
- SELECT Toy, (Number * Weight)AS TotalWeight
FROM Products,Parts
GROUP BY Toy;

Clear my choice



EID	Name	Department
001	Ahmad	CS
002	Ali	CIS
003	Sameh	CIS
004	Salem	SC
005	Huda	SC
006	Ali	CS

Time left

Based on the above table, how many records and columns will be generated after executing the following SQL statement:

```
Select department, count(EID)
from employee
group by Department
order by Name;
```



- 4 records and One column
- 3 records and Two columns
- 5 records and Two columns
- 4 records and Two columns

حد بعرف

9
out of
n

For the many-to-many case, the relationship set must be represented as a combined relation with either participating entity

True or False?

Select one:

- True
- False



Next page



Navigation bar with a red background, containing a hamburger menu, a logo, a globe icon, and a user profile icon.

Question 6
Not yet answered
Marked out of 3.00
Flag question

Based on the following TWO Tables (Products and Parts), which SQL query finds weight for each type of toy? Time left 0:34:56

Products Table				Parts Table	
Toy	Part	Number	Colour	Part	Weight
Alien	head	2	green	tentacle	15
Alien	alien body	1	purple	alien body	75
Alien	tentacle	10	green	wheel	25
Car	car body	1	blue	car body	60
Car	wheel	4	red	funnel	20
Engine	wheel	6	blue	head	40
Engine	funnel	1	red		

- SELECT Toy, SUM(Number * Weight) AS TotalWeight FROM Products,Parts GROUP BY Toy;
- SELECT Toy, (Number * Weight)AS TotalWeight FROM Products,Parts GROUP BY Toy;
- SELECT Toy, SUM(Number * Weight) AS TotalWeight FROM Products NATURAL JOIN Parts GROUP BY TotalWeight;

Navigation panel with a grid of buttons numbered 7-25 and a 'Finish attempt ...' button.



Activate Windows
Go to PC settings to activate Windows.

The _____ is used to hide certain data from some users

- Transaction
- Table
- Integrity Constraint
- View

Clear my choice

POWERUNIT

هيك؟



Time left 0:34:02

Question 9

Not yet answered

Marked out of 2.00

Flag question

For the many-to-many case, the relationship set must be represented as a combined relation with either participating entity

True or False?

Select one:

True

False

POWERUNIT

A

Next page

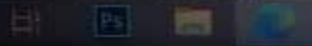
Quiz navigation

1	2	3	4	5	6	7
8	9	10	11	12	13	14
15	16	17	18	19	20	21
22	23	24	25	26	27	28

Finish attempt...

Stay in touch

Contact info



introduction to database systems | جميع الشعب

Home > My courses > introduction to database systems | جميع الشعب > General > Database Final Exam (click here to start)

Time left 0:37:19

Question 5
Not yet answered
Marked out of 2.00
Flag question

Select the correct SQL statement to give Sana all permissions to access students table only

- Grant all privileges on students to username = Sana;
- Grant all privileges on students to Sana;
- Grant all privileges on Sana to students;
- Grant all permissions on students to Sana;



Next page

Quiz navigation

1	2	3	4	5	6
7	8	9	10	11	12
13	14	15	16	17	18
19	20	21	22	23	24
25					

Finish attempt ...

Time left 0:38:35

One of the main disadvantages of building database systems is that they require more knowledge, money, skills, and time

True or False?

Select one:

- True
- False

 POWERUNIT

Next page

search



Based on the tables below, how many rows the following SQL stat

orders

product	quantity	orderId
wheel	100	123
axle	10	123
wheel	20	999
nut	30	444
nut	50	999

pricing

product	price
axle	10
wheel	20
screw	2
bolt	5
nut	3

Select product, sum(quantity)
from orders
group by product
having sum(quantity) > 80



- Three rows
- Two rows
- Four rows
- One row

Clear my choice



Time left 0:41:02

Question 3

Not yet answered

Marked out of 2.00

Flag question

Based on the following authorization commands (ordered from 1 to 4), which of the following privileges is true, assuming that Ali is the owner of the database?

Order	By	Command
1	Ali	Grant Select on Employee to Omar with grant option;
2	Omar	Grant Select on Employee to Samer with grant option;
3	Ali	Grant Update on Employee to Omar with grant option;
4	Ali	Revoke Select on Employee From Omar Cascade;

Select one:

- Ali has select privilege on employee
Omar and Ali have Update privilege on employee
- Omar and Ali have Update privilege on employee
Omar, Samer and Ali have select privilege on employee
- Samer and Omar have select privilege on employee
Omar and Ali have Update privilege on employee
- Ali and Omar have select privilege on employee
Ali and Omar have Update privilege on employee

Clear my choice

Quiz navigation

1	2	3	4	5	6
7	8	9	10	11	12
13	14	15	16	17	18
19	20	21	22	23	24
25					

Finish attempt ...



Question 7

Not yet answered

Marked out of 2.00

Flag question

Based on the tables below, how many rows the following SQL statement will produce

orders			pricing	
product	quantity	orderid	product	price
wheel	100	123	axle	10
axle	10	123	wheel	20
wheel	20	999	screw	2
nut	30	444	bolt	5
nut	50	999	nut	3

Select product, sum(quantity)
from orders
group by product
having sum(quantity) >= 80

- Two rows
- Four rows
- One row
- Three rows

Clear my choice



Finish atten

Question 5

Not yet answered

Marked out of 3.00

Flag question

Based on the following TWO Tables (Products and Parts), which SQL query finds the total weight for each type of toy ?

Products Table

Toy	Part	Number	Colour
Alien	head	2	green
Alien	alien body	1	purple
Alien	tentacle	10	green
Car	car body	1	blue
Car	wheel	4	red
Engine	wheel	6	blue
Engine	funnel	1	red

Parts Table

Part	Weight
tentacle	15
alien body	75
wheel	25
car body	60
funnel	20
head	40

- SELECT Toy, SUM(Number * Weight) AS TotalWeight
FROM Products,Parts
GROUP BY Toy;
- SELECT Toy, (Number * Weight)AS TotalWeight
FROM Products,Parts
GROUP BY Toy;
- SELECT Toy, SUM(Number * Weight) as TotalWeight
FROM Products INNER JOIN Parts

POWERUNIT

سؤال

1	2	3	4	5
7	8	9	10	11
13	14	15	16	17
19	20	21	22	23
25				

Finish attempt ...

Based on the following authorization commands (ordered from 1 to 4), which of the following privileges is true, assuming that Ali is the owner of the database?

Order	By	Command
1	Ali	Grant Select on Employee to Omar with grant option;
2	Omar	Grant Select on Employee to Samer with grant option;
3	Ali	Grant Update on Employee to Omar with grant option;
4	Ali	Revoke Select on Employee From Omar Cascade;

Select one:

- Ali has select privilege on employee
- Omar and Ali have Update privilege on employee
- Omar and Ali have Update privilege on employee
Omar, Samer and Ali have select privilege on employee
- Samer and Omar have select privilege on employee
Omar and Ali have Update privilege on employee
- Ali and Omar have select privilege on employee
Ali and Omar have Update privilege on employee

ID	Name	Grade	Age
10	Tom	1	20
31	Jack	2	21
11	Sam	3	23
12	Sally	1	24
14	Sarah	8	25
26	Silvia	3	26

Based on the above Employee table, HOW MANY rows will result from the following SQL query:

```
select grade, min(age)
from employee
where age > 22
group by grade
having min(age) > 23
```



Select one:

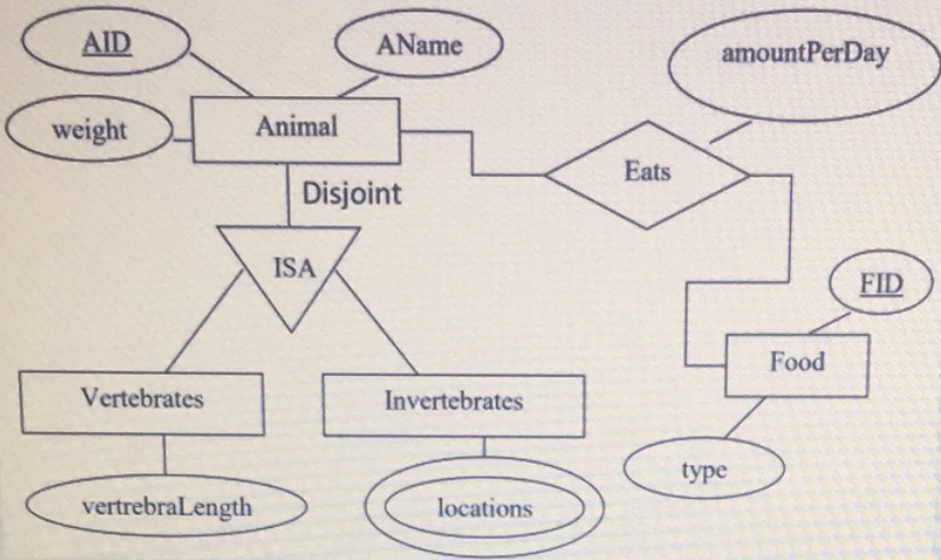
- FIVE rows
- FOUR rows
- THREE rows
- TWO rows
- SIX rows

Clear my choice

A

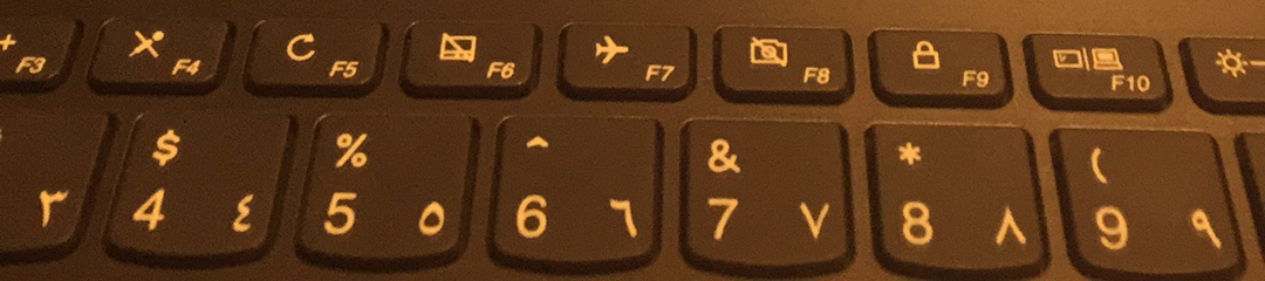
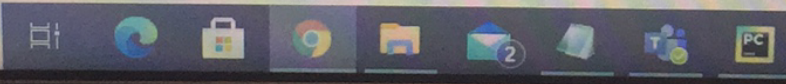


After mapping the following ERD, then the suitable schema for table *Vertebrae*



- (AName, weight, vertebraLength)
- (AID, vertebraLength)
- (AID)
- (AID, AName, weight, vertebraLength)

Clear my choice



Not yet answered

Marked out of 2.00

Flag question

Based on the emp schema above, which SQL statement will create a view to provide information about departments whose average salaries is over than \$1300

Time left 0:43:16

```
emp(Name varchar(20),
     ID char(5) ,
     Dep_name varchar(20),
     Salary numeric(8,2));
```

Select one:

- Create view dept_sal from (select dep_name, avg(salary) from emp group by dep_name having avg(sal) > 1300)
- Create new view dept_sal as select dep_name, avg(salary) from emp group by dep_name having avg(sal) > 1300
- Create view dept_sal as select dep_name, avg(salary) from emp group by dep_name having avg(sal) > 1300
- Create view dept_sal as select dep_name, avg(salary) from emp having avg(sal) > 1300

متأكدة

POWERUNIT

10	11	12	13	14	15	16	17
19	20	21	22	23	24	25	26

Finish attempt ...

Type here to search



Time left

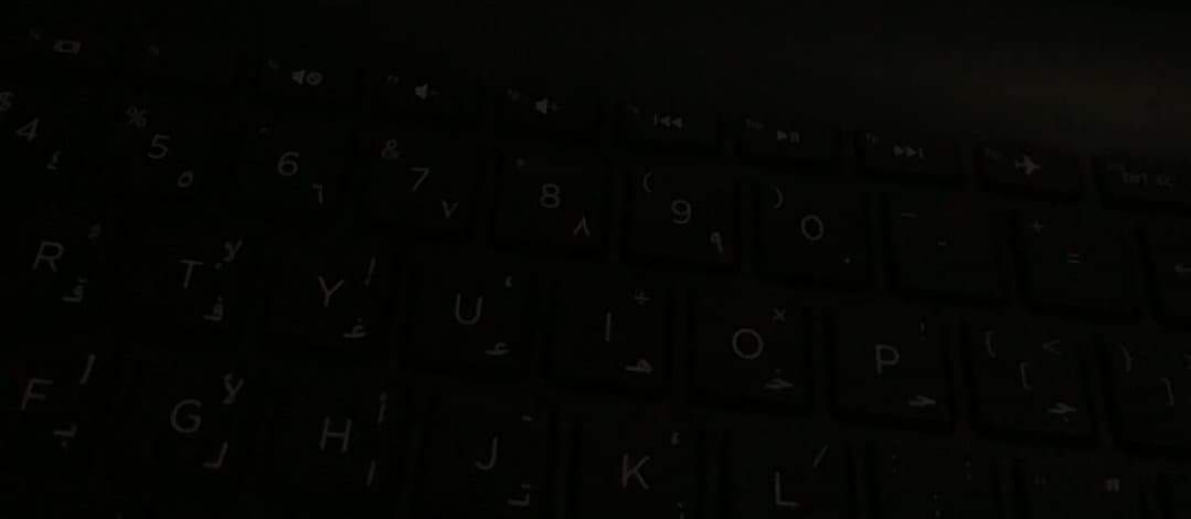
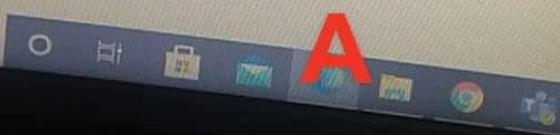
Select the correct SQL statement to give Sana the permission to read students table only

- Grant select on students to Sana;
- Grant all privileges on students to username = Sana;
- Grant all permissions on students to Sana;
- Grant all privileges on students to Sana;

Clear my choice



Next page



Question 3

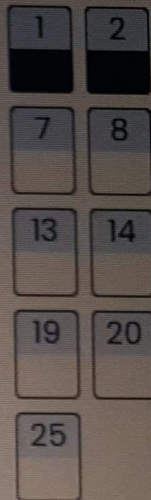
Not yet
answeredMarked out of
2.00Flag
question

Based on the following authorization commands (ordered from 1 to 4), which of the following privileges is true, assuming that Ali is the owner of the database?

Order	By	Command
1	Ali	Grant Select on Employee to Omar with grant option;
2	Omar	Grant Select on Employee to Samer with grant option;
3	Ali	Grant Update on Employee to Omar with grant option;
4	Ali	Revoke Select on Employee From Omar Cascade;

Select one:

- Ali has select privilege on employee
- Omar and Ali have Update privilege on employee
- Omar and Ali have Update privilege on employee
Omar, Samer and Ali have select privilege on employee
- Samer and Omar have select privilege on employee
Omar and Ali have Update privilege on employee
- Ali and Omar have select privilege on employee
Ali and Omar have Update privilege on employee

[Clear my choice](#)

Finish at



Time left 0:46:14

Select the correct SQL statement to give Sana all permissions to access students table only

- Grant all privileges on students to username = Sana;
- Grant all privileges on Sana to students;
- Grant all permissions on students to Sana;
- Grant all privileges on students to Sana;

Clear my choice

Quiz navigation

1	2	3	4	5	6
10	11	12	13	14	15
19	20	21	22	23	24

Finish attempt ...

POWERUNIT

اكيد صح

Next page



Search here to search



introduction to database systems | جميع الشعب

How many types there are for mapping cardinality of binary relationship sets?

- Four types
- Two types
- Three types
- One type

Clear my choice

POWERUNIT

A

touch



10	Tom	1	20
31	Jack	2	21
11	Sam	3	23
12	Sally	1	24
14	Sarah	8	25
26	Silvia	3	26

Time left

Based on the above Employee table, HOW MANY rows will result from the following SQL query

```
select grade, max(age)
from employee
where age > 22
group by grade
having max(age) > 23
```



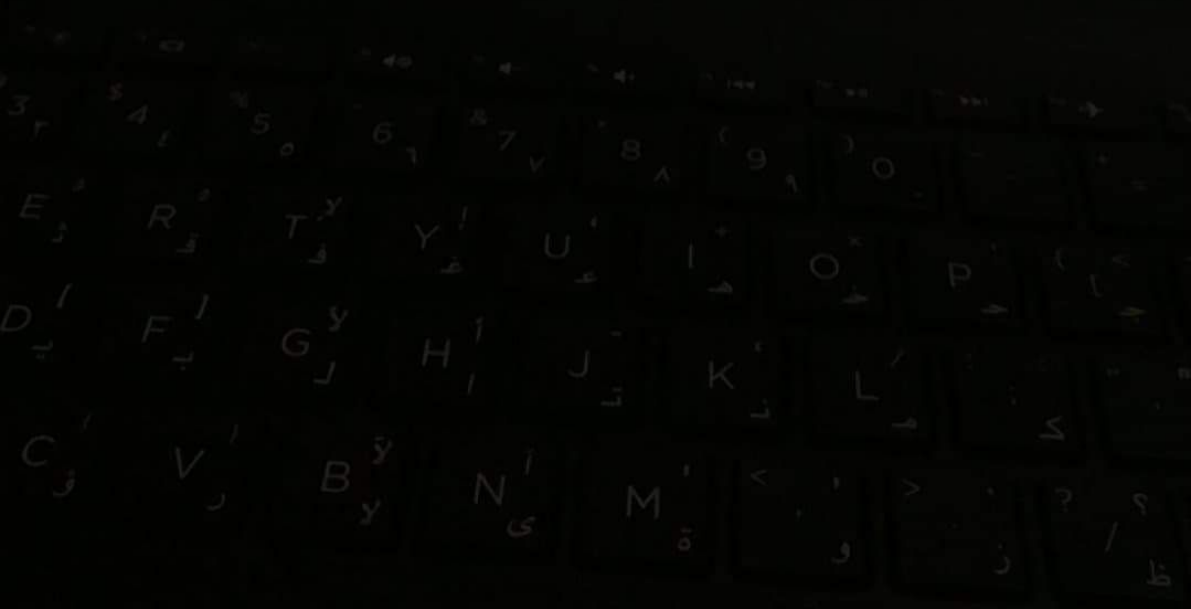
Select one:

- FIVE rows
- THREE rows
- FOUR rows
- SIX rows
- TWO rows

Clear my choice

تأكدوا

A





select * from emp_sup as e1 natural right outer join emp_sup as e2;



Person	Supervisor
null	Susan
Bob	Alice
Alice	David
David	Mary
Mary	Susan



Person	Supervisor
Bob	Alice
Alice	David
David	Mary
Mary	Susan

POWERUNIT



Person	Supervisor
Susan	null



Person	Supervisor
--------	------------



Question 4

Not yet answered

Marked out of 2.00

Flag question

Time left 0:49:00

Based on the emp schema structure below, which of the following SQL queries will get departments that have one employee?

```
emp(Name varchar(20),  
     ID char(5) ,  
     Dep_name varchar(20),  
     Salary numeric(8,2));
```

Select one:

- Select dep_name, count(ID)
from emp
group by dep_name
having count(ID) = 1
- Select count(ID)
from emp
group by dep_name
where count(ID) = 1
- Select dep_name, sum(ID)
from emp
group by dep_name
having sum(ID) = 1
- Select dep_name, count(ID)
from emp
group by dep_name
where count(ID) = 1



emp_sup

Person	Supervisor
Susan	null
Bob	Alice
Alice	David
David	Mary
Mary	Susan

Based on the above table, what is the output of the following SQL statement:

```
select * from emp_sup as e1 natural right outer join emp_sup as e2;
```



Person	Supervisor
null	Susan
Bob	Alice
Alice	David
David	Mary
Mary	Susan



Based on the Two Tables, how many Null values the given query will produce?

orders			pricing	
product	quantity	orderId	product	price
wheel	100	123	wheel	10
axle	10	123	axle	20
axe	20	999	axe	2
nut	50	999	nut	3

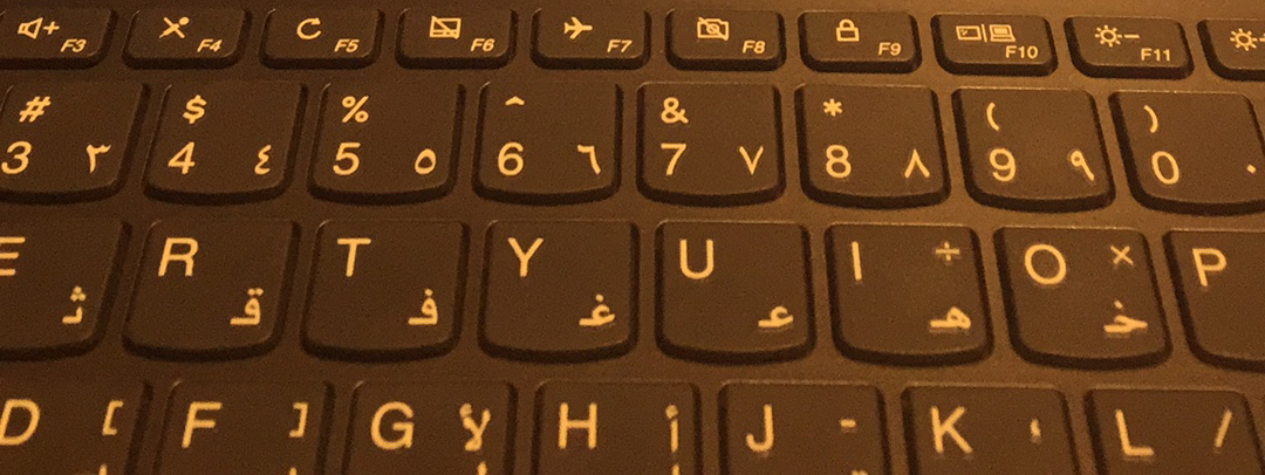
Select *

from orders natural left outer join pricing;

- Three Null Values
- There will be No Null Values
- One Null value
- Two Null Values

[Clear my choice](#)

POWERUNIT



Time left 0:48:26

Question 4

Not yet
answeredMarked out of
2.00Flag
question

One of the main disadvantages of building database systems is that they require more knowledge, money, skills, and time

True or False?

Select one:

- True
- False

POWERUNIT**A**

Next page

Stay in touch

Contact info

The _____ is used to hide certain data from some users

- Integrity Constraint
- View
- Transaction
- Table

Clear my choice



Next page



Time left 0:51:51

Question 3

Not yet answered

Marked out of 2.00

Flag question

Which of the following SQL Queries identifies instructors that have no dependents ?

- Select name from instructor where dependent_id like Null
- Select name from instructor where dependent_id is not Null
- Select name from instructor where dependent_id is Null
- Select name from instructor where dependent_id = Null

[Clear my choice](#)



A

[Next page](#)

Stay in touch



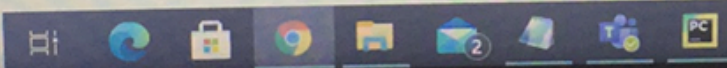
After normalizing the following table, which of the given option represents the relation in Normal Form ?

Time

ID	Name	Major	Collage	Course_ID	Instructor_ID	Instructor_Name
1	Omar	Biology	Science	1001	9001	John
2	Ali	Math	Science	2001	9002	Kareem
3	Salem	CIS	KASIT	3001, 3002	8001, 8002	Ahmad, Kamal

- (ID, Name, Major, College)
(Course ID, Instructor_ID, Instructor_Name)
(ID, Course ID)
- (ID, Name, Major, College)
(Course ID, Instructor_ID, Instructor_Name)
(ID, Course ID)
- (ID, Name, Major, College)
(Course ID, Instructor_ID, Instructor_Name)
(ID, Course ID)
- (ID, Name, Major, College)
(Course ID, Instructor_ID, Instructor_Name)
(Course ID, ID)

Clear my choice



Question 2

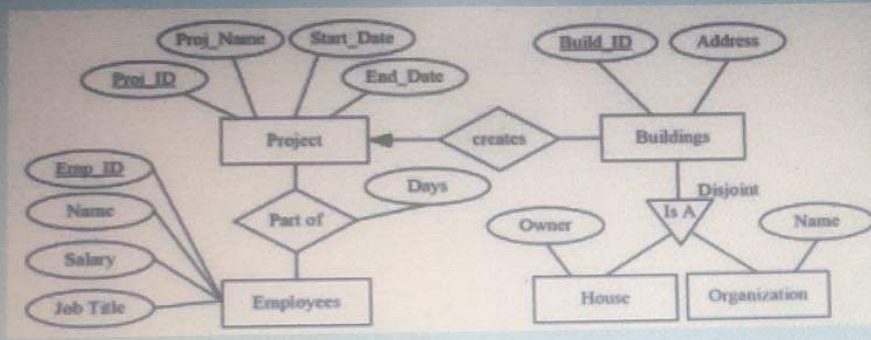
Not yet answered

Marked out of 2.00

Flag question

Time left 0:54:44

Based on the following ERD, WHICH SQL query will find how many organization created by each project name:



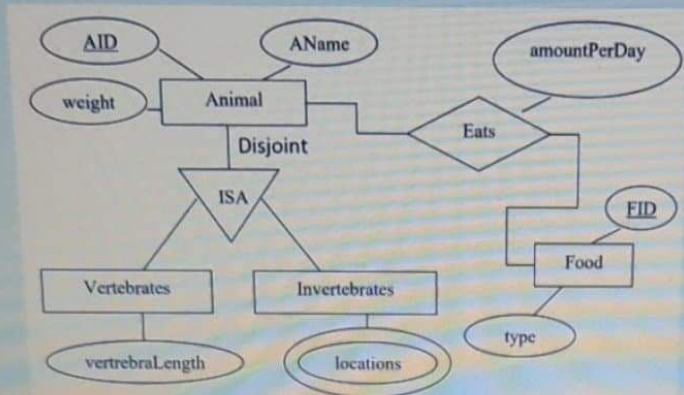
Select one:

- select proj_id, count(build_id) from project natural join organization group by proj_name;
- select proj_name, count(build_id) from project, building group by build_id;
- select proj_name, count(build_name) from project natural join organization group by proj_name;

POWERUNIT

Finish attempt ...

After mapping the following ERD, then the suitable schema for table *Vertebrates* is



- (AName, weight, vertebraLength)
- (AID)
- (AID, vertebraLength)
- (AID, AName, weight, vertebraLength)

Clear my choice

A

POWERUNIT

Student

ID	Name	Address
0123	Ahmad	Amman
0124	Issa	Aqaba

Mall

ShopID	SName
001	R&Z
002	XYZ
003	MMB

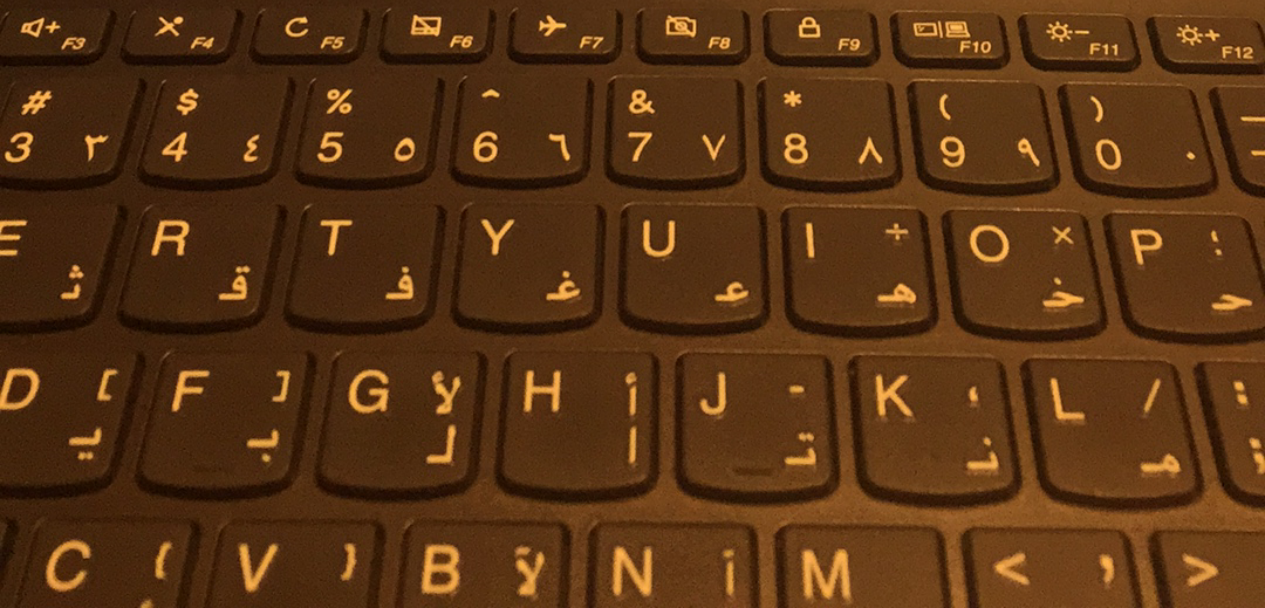
Based on the above tables, how many records will be generated after executing the following statement:

Select * from Student, Mall;

- 3 records
- 6 records
- 9 records
- 5 records

Clear my choice

POWERUNIT



Select one:

- Create view dept_sal
from (select dep_name, avg(salary)
from emp
group by dep_name
having avg(sal) > 1300)
- Create view dept_sal
as select dep_name, avg(salary)
from emp
group by dep_name
having avg(sal) > 1300
- Create new view dept_sal
as select dep_name, avg(salary)
from emp
group by dep_name
having avg(sal) > 1300
- Create view dept_sal
as select dep_name, avg(salary)
from emp
having avg(sal) > 1300

POWERUNIT

e here to search



Time left 0:56:04

Question 2

Not yet answered

Marked out of 2.00

Flag question

Based on the Emp schema above, which SQL statement will create a view to provide information about departments whose average salaries is over than \$1300

```
emp(Name varchar(20),
     ID char(5) ,
     Dep_name varchar(20),
     Salary numeric(8.2));
```

Select one:

- Create view dept_sal
from (select dep_name, avg(salary)
from emp
group by dep_name
having avg(sal) > 1300)
- Create view dept_sal
as select dep_name, avg(salary)
from emp
group by dep_name
having avg(sal) > 1300
- Create new view dept_sal



POWERUNIT

Quiz navigation

1	2	3	4	5
7	8	9	10	11
13	14	15	16	17
19	20	21	22	23
25				

Finish attempt ...

Which of the following SQL statements does not produce a Cartesian Product:

- select * from Course, Prereq;
- select * from Course cross join Prereq;
- select * from Course inner join Prereq;
- select * from Course inner join Prereq on Course.CID = Prereq.CID;

Clear my choice

بس تاكدوا

POWERUNIT

الوقت المتبقي 0:58:15

Person	Supervisor
David	Mary
Mary	Susan

Person	Supervisor
Susan	null

Person	Supervisor
Bob	Alice
Alice	David
David	Mary
Mary	Susan

Person	Supervisor
null	Susan
Bob	Alice
Alice	David
David	Mary
Mary	Susan

POWERUNIT



الوقت المتبقي 0:58:21

Person	Supervisor
Susan	null
Bob	Alice
Alice	David
David	Mary
Mary	Susan

Based on the above table, what is the output of the following SQL statement:
select * from emp_sup as e1 natural left outer join emp_sup as e2;

Person	Supervisor
Susan	null
Bob	Alice
Alice	David
David	Mary
Mary	Susan

Person	Supervisor
Susan	null

Person	Supervisor
Bob	Alice
Alice	David
David	Mary

سؤال 1
غير محاب عليه
عدد
الدرجة من 2.00
علم هذا السؤال



إنهاء المحادثة ...

Time left 0:

The SQL statement to provide 'delete' and 'insert' privileges to user 'Omar' on 'Department' table is:

Select one:

- Grant delete, insert on Omar to Department;
- Grant delete, insert to Omar on Department;
- Grant Omar with delete, insert on Department;
- Grant delete, insert on Department to Omar;

[Clear my choice](#)

POWERUNIT

[Next page](#)

here to search



A

Student

ID	Name	Address
0123	Ahmad	Amman
0124	Issa	Aqaba
0125	Salam	Amman

Mall

ShopID	SName
001	R&Z
002	XYZ
003	MMB

Based on the above tables, how many records will be generated after executing the following SQL statement:

Select * from Student, Mall;

- 3 records
- 6 records
- 5 records
- 9 records

Clear my choice



A

Quiz navigation

1	2	3	4
9	10	11	12
17	18	19	20
25			

Finish attempt ...