

10

University of Jordan
 Computer engineering department
 Digital Electronics
 Quiz #3

Name : *عبد الحيا عبد الله حوران*

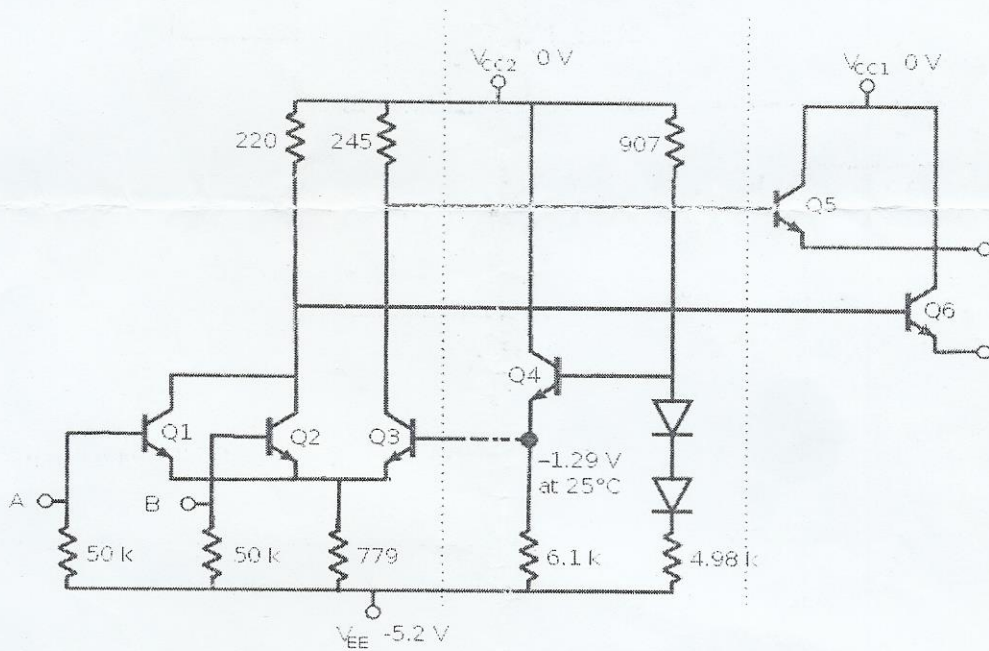
number: *0100576*

ECL is an acronym of **Emitter-Coupled Logic**

The main advantage of ECL is in its:

- Fan out
- Noise margin
- Power dissipation
- **Speed**

Given the following ECL gate. Assume $V_{BE(Active)} = 0.75\text{ V}$ $h_{FE} = 100$



Answer the following questions:

The logic function at V_{o1} (in terms of A and B) is:	$A + B$
The logic function at V_{o2} (in terms of A and B) is:	$(A + B)'$
The logic low level is:	- 1.74
The logic high level is:	- 0.75